



# Technical Information

## APSE-22 Solar Collector

International Version  
A2-07.10.8-PB-V2 - Mar 2013

### Part Codes

APSE-22 Solar Collector Complete is comprised of:

- 1 x APSE-22-KIT (Manifold and standard frame)
- 1 x ET/HP-10/10 (Tubes and heat pipes)
- 1 x ET/HP-12/12 (Tubes and heat pipes)

### Applications

The Apricus APSE-22 collector is designed to be used in a wide variety of solar thermal (heat) applications in almost any climate. The evacuated tube and heat pipe technology provides very efficient and reliable solar thermal production in a simple to install, low maintenance design.

### Features

- Twin glass evacuated tube (passive solar tracking)
- Freeze protected heat pipes
- Potable water certified copper header
- 22mm OD copper inlet/outlet connections
- Recycled glass wool manifold insulation
- 10 year warranty on tubes and heat pipes
- 15 year warranty on copper header and SS frame
- Efficient performance at high differential temperatures

### Materials of Construction

Evacuated Tubes:	Borosilicate 3.3 Glass
Absorber:	Al-N on Al on Glass
Heat Pipes:	High purity copper
Heat Transfer Fins:	Aluminum
Rubber Components:	HTV Silicone Rubber
Mounting Frame:	439 Stainless Steel or 6005-T5 Anodized AL
Manifold Casing:	3A21 Anodized AL

### Performance Data

Ideal Flow Rate:	1-2 L/mim
Max Flow Rate:	15 L/min
Peak Power Output:	1,425 W *
Eta0:	0.687 *
a1 (W/m²K):	1.505 *
a2 (W/m²K²):	0.0111 *

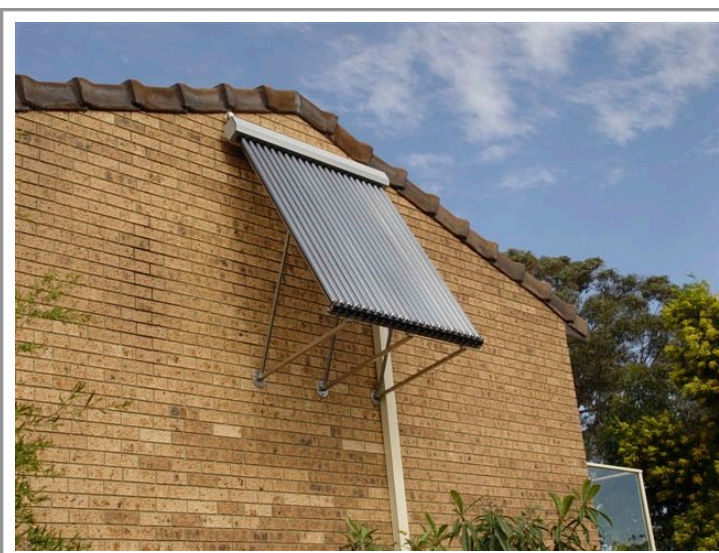
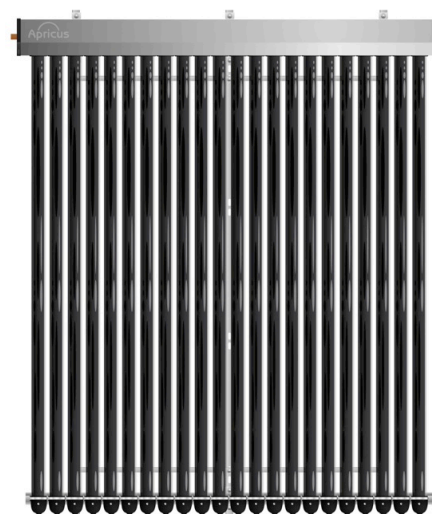
\* Data from ITW report 09COL805. Calculated at midday.

### Physical Specifications

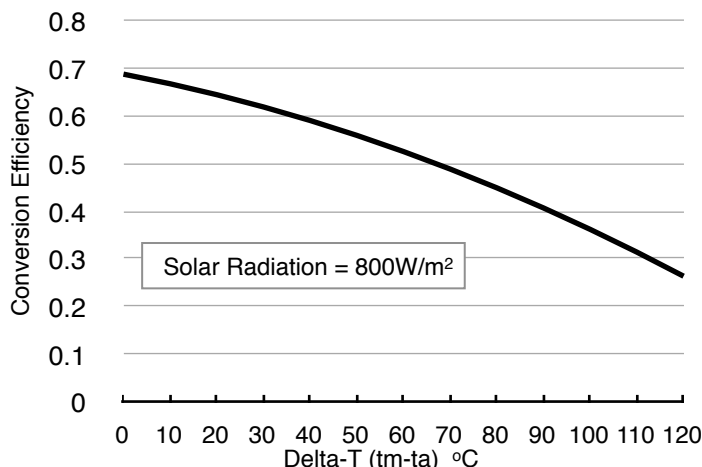
Dimensions (WxHxD):	1636 x 2005 x 136 mm
Aperture Area:	2.07m²
Gross Area:	3.28m²
Gross Dry Weight:	71.3 kg
Fluid Capacity:	600 ml
Max Pressure:	800 kPa
Stagnation Temperature:	220°C

### Certifications

Solarkeymark:	011-7S161 R
AS2712:2007:	100633



### Collector Performance



**Sustainable HOT WATER Solutions, Delivered by APRICUS**

Apricus Solar Co., Ltd  
service@apricus.com www.apricus.com